

ITEM 26. CAR SHARE – ROTHSCHILD AVENUE ROSEBERY

TRIM RECORD NO: 2016/517927

RECOMMENDATION

It is recommended that the Committee endorse the reallocation of parking on the eastern side of Rothschild Avenue, Rosebery between the points 59.5 metres and 63.5 metres (one car space) south of Epsom Road as “No Parking Car Share Vehicles Excepted” subject to the following:

- (A) The City will only install signage for the car share space when Hertz 24/7 has a car to occupy the space.

VOTING MEMBERS FOR THIS ITEM

<i>Voting Members</i>	<i>Support</i>	<i>Object</i>
City of Sydney		
Roads and Maritime Services		
NSW Police – Redfern LAC		
Representative for the Member for Heffron		

DECISION

BACKGROUND

The City is committed to providing dedicated parking for car sharing across the Local Government Area as part of a Council-approved Car Share Policy. A submission has been received from Hertz 24/7 for a car share space in Rothschild Avenue, Rosebery, south of Epsom Road.

COMMENTS

The kerb space on the eastern side of Rothschild Avenue, Rosebery between Epsom Road and Cressy Street is currently signposted as “No Parking Authorised Car Share Vehicles Excepted” and “1P 8.30am-6pm, Mon-Fri”. This proposal will extend the existing car share bay in Rothschild Avenue to form a double pod.

The car share space will be installed and managed in accordance with the Roads and Maritime Service’s Technical Direction 2007/04 and the provisions of the Council-approved Car Share Policy.

Car sharing is popular in more than 600 cities worldwide, and research has shown substantial environmental benefits. Car sharing reduces total urban driving, reduces household vehicle holdings, and increases walking, cycling and public transport use.

On average, each car share vehicle in the City can replace up to 12 private vehicles that would otherwise compete for parking.

Current membership is approximately 31,485, of which 9,930 are business members.

As of August 2016, there were 19 Hertz 24/7 members in Postcode 2018.

Within a 250 metre radius of this location, there is currently one space allocated for Hertz 24/7 car share vehicles.

CONSULTATION

The City consulted local residents and businesses in the area. There were 358 letters sent out with no responses supporting and one response opposing the proposal.

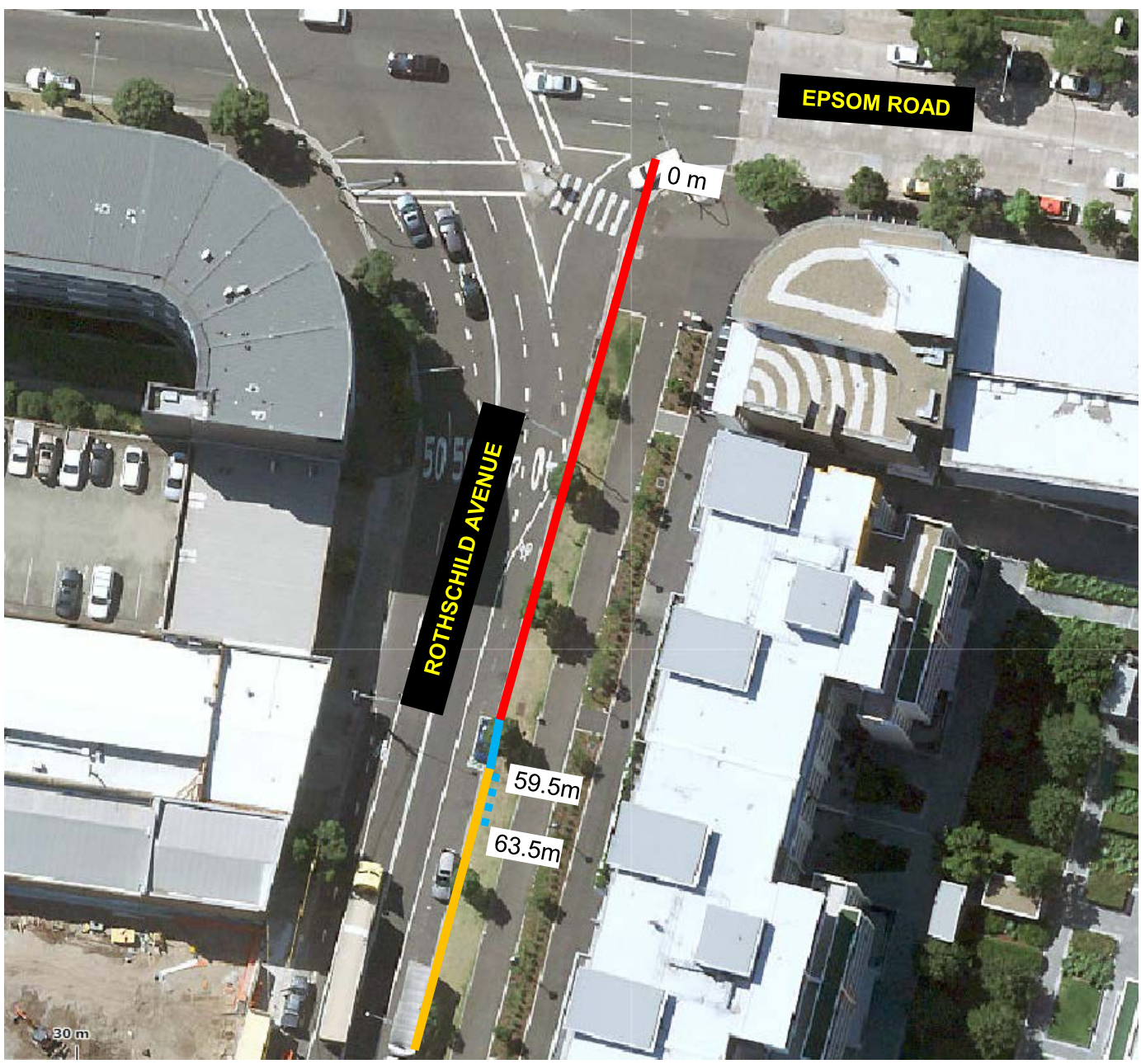
FINANCIAL

Funds are available in the current budget.

ATTACHMENTS

Car Share – Rothschild Avenue, Rosebery

Claudia Calabro, Business Support Officer



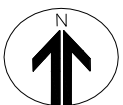
EXISTING: NO STOPPING

**EXISTING: NO PARKING
AUTHORISED CAR SHARE VEHICLES
EXCEPTED (ONE SPACE)**

EXISTING: 1P 8:30AM – 6PM MON-FRI

**PROPOSED: NO PARKING
AUTHORISED CAR SHARE VEHICLES
EXCEPTED (ONE SPACE)**

PROPOSAL



**ROTHSCHILD AVENUE, ROSEBERY
PROPOSED CAR SHARE SPACE**



